



eSHOWCASE

IGA ASSOCIATE MEMBERS: LOYAL. ENGAGED. READY TO PERFORM.



Associate Members are encouraged to use this **IGA Preferred Vendor Seal** in their correspondence and communications with casino properties!

COMP TRADING — DIAMOND LEVEL



COMP
TRADING

COMPTRADINGCO.COM

KNOWN FOR: LOYALTY PROGRAMS

Our programs will increase your company's brand image and customer retention through our unique and proprietary marketing tools, vast product selection and the best prices.

**PRICES
SLASHED**

**JUNE
SPECIALS**



CEDAR TRAIL
XL CAMPING CHAIR

\$5.99



CEDAR TRAIL
FOLDING GRILL

\$8.99



KENNETH COLE REACTION
DOWLING SATCHEL

\$19.99



FIRST CLASS
26" ROLLING DUFFEL

\$9.99

HARRY HIDARY
harry@mtmsalescorp.com
201.520.1366 x 212

Specials are for the month of June only. Specials are limited to the quantities available and are on a first come first served basis.

HAWKINS CONSTRUCTION — GOLD LEVEL

DUDLEY W. RINAKER

drinaker@hawkins1.com // 402-221-7635

www.hawkins1.com

KNOWN FOR: Construction

Hawkins Construction Company is a third-generation family-owned and operated construction firm that provides General Contracting, Construction Management and Design-Build services.

From state-of-the-art commercial building projects to the runways, highways and bridges that link them, Hawkins Construction Company's reputation as the region's most accomplished contractor for completing projects ahead of schedule is built to one standard: excellence.

RECENT WORK: UNIVERSITY OF NEBRASKA AT OMAHA HEALTH, P.E. AND RECREATION BUILDING This \$33.8 million project required consistent communication with multiple departments within the HPER facility. The project consisted of additions to all sides of the existing building, renovating 90 percent of the existing building, all while the building was fully occupied.





eSHOWCASE

IGA ASSOCIATE MEMBERS: LOYAL. ENGAGED. READY TO PERFORM.

AGS, LLC — SILVER LEVEL

JOE BERNARDI

j.bernardi@playags.com // 702-722-6700

www.playags.com

KNOWN FOR: Gaming Products

AGS is a global company focused on creating a diverse mix of engaging gaming experiences that connect deeply and personally with casino operators and players. Our roots are firmly planted in the Class II Native American gaming market, but our customer-centric culture and dramatic expansion have helped us branch out to become one of the most all-inclusive commercial gaming suppliers. Now powered by high-performing Class II and Class III slots, a table games portfolio, and highly rated social casino products, we offer an unmatched value proposition for our casino partners.



Thanks to our expanded slot library and jurisdictional licenses, AGS has become one of the leading Class II suppliers in the world, and our Class III library is constantly on the rise with the momentous growth of our core cabinet ICON™ and the recent release of our new premium cabinet Orion™. We've also quickly become a leading table game supplier with more than 1,100 table games installed, and a growing table equipment portfolio, including the newly launched white-label Bonus Spin™ and our single-deck poker shuffler the Dex S™. We're constantly investing in our partners' future, and ours, to ensure we bring extraordinary gaming experiences that entice today's players and tomorrow's.

OMAHA STEAKS — SILVER LEVEL

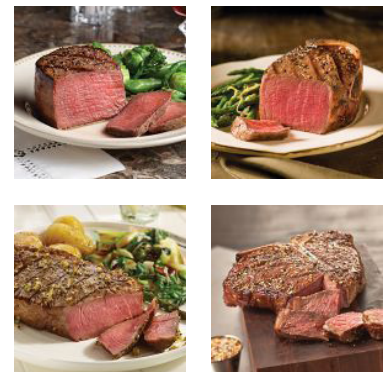
NEIL LUCAS

NeilL@omahasteaks.com // 712-256-0194

www.omahasteaks.com/foodservice

KNOWN FOR: Steaks

Omaha Steaks provides fresh and frozen beef, pork, veal and lamb products. Since 1917, personalized and customized products have been the company's hallmark. Its products, such as the popular Omaha Steaks Angus Beef, USDA Prime and USDA Choice products, exceed the North American Processors Association (NAMP) product specifications for trim and craftsmanship. Products are available in portion control and steak-ready.





eSHOWCASE

IGA ASSOCIATE MEMBERS: LOYAL. ENGAGED. READY TO PERFORM.

ASSOCIATE MEMBER DIRECTORY

PLATINUM



Aristocrat Technologies, Inc.
Girle M. Balingit
Girle.Balingit@aristocrat-inc.com



Doll Distributing
Kelle Molloy
kelle.molloy@dolldistributing.com



IGT
Ken Jacobs
Ken.Jacobs@igt.com



Konami Gaming Inc
Tashina Wortham
wortham0609@konamigaming.com



Iowa Bud Wholesalers
Tod Wolter
tod.wolter@7Gdistributing.com

DIAMOND

Associated Computer Systems
Fritz Craiger
fcraiger@acsLtd.com

Biometrica
Kevin Parker
kparker@biometrica.com

Capitol Marketing Concepts
Tom Coffeen
tcoffeen@capitolmarketing.com

Comp Trading (MTM Sales Corp.)
Harry Hidary
harry@mtmsalescorp.com

Electronic Communications Inc.
Tyler Solma
tyler@ecisystems.com

EVERI
Jay Koldus or Roe Irons
roe.irons@everi.com

Imagine This
Patrick Papaccio
patrick@imaginethispromo.com

Scientific Games
Remington Pullin
Remington.Pullin@scientificgames.com

Sioux City Night Patrol
Kurt Bornholtz, kurt@siouxsales.com

The Printer Inc.
Bill Benskin
bill.benskin@the-printer.com

USA Security
Kohler Brandon
kbrandon@usasecurityinc.com



eSHOWCASE

IGA ASSOCIATE MEMBERS: LOYAL. ENGAGED. READY TO PERFORM.

GOLD

Ainsworth Game Technology

Joseph Cox, JCoX@agtslots.com

A.J.R. Equities, Inc

AJ Regulbuto, ajr@ajrequitiesinc.com

Atlantic Bottling Company

Kirk J. Tyler, ktyler@atlanticbottling.com

Avery Brothers LLC

Milton Avery, miltavery@averyoutdoor.com

Capital Sanitary

Dave Smetzer, dsmetzer@capitalsanitary.com

Coca-Cola Company

Jamie Peterson, jpeterson@coca-cola.com

Data Business Equipment

Lauren Miller, lmiller@databusinessequipment.com

Distinct Advertising

Carroll Quinn, Carroll@DistinctAdvertising.com

Ecolab

Van Seaman, van.seaman@ecolab.com

Edward Don & Company

Rob Utterbeck, utterbr@don.com

Farmer Brothers Coffee Company

Dale M. Anderson, danderson@farmerbros.com

Friedmutter Group

Bob Carino, bcarino@fglv.com

Gaming Partners International (GPI)

Jane Crosson, jcrosson@gpigaming.com

Global Payments Gaming Services

Erin Smetana, erin.smetana@globalpay.com

Hawkins Construction Company

Dudley W. Rinaker, drinaker@hawkins1.com

Honkamp Krueger & Co., P.C.

Heather Vetter, hvetter@honkamp.com

King Food Service, Inc.

Matthew D. Cutkomp,
Matt.Cutkomp@Kingfoodservice.com

Lithographic Communications LLC

Rick Pietrzak, rpietrzak@litho-com.com

Marsh USA

Caroline Morris, caroline.morris@marsh.com

Martin Bros. Distributing Co., Inc.

Scott Vermillion, svermillion@martinsnet.com

Nagle Signs Inc.

Tom Nagle, tjnagle@naglesigns.com

Reinhart Foodservice

Drew Beck, AFBeck@RFSDelivers.com

Springer Professional Home Services

Eddie Holman, edholman@trustspringer.com

Supply Works

Bob J. Duede, bduede@supplyworks.com

Sysco Iowa

Ryan Elsen, Elsen.Ryan@Iowa.Sysco.com

US Foods, Inc. - Iowa Division

Adela Hunter, Adela.Hunter@usfoods.com

Voss Distributing

Zac Voss, zac@vossdist.com

W. A. Klinger, LLC

John Gleeson, JohnG@KlingerCompanies.com

Wilson Restaurant Supply & Equip.

Jamie Wilson, jamiew@wilsonrs.com



eSHOWCASE

IGA ASSOCIATE MEMBERS: LOYAL. ENGAGED. READY TO PERFORM.

SILVER

AGS

Joe Bernardi, j.bernardi@playags.com

Anderson Erickson Dairy Co.

Mike Worden, mikew@aedairy.com

BakeMark USA

Tim Solum, tim.solum@csmbakerysolutions.com

Braunger Foods, LLC

Tom Kloucek, tkloucek@braungerfoods.com

Communications Engineering Company (CEC)

Melanie Oeltjenbruns, marketing@cecinfo.com

Cummins Allison

Branch Manager, eulj@cumminsallison.com

Dimensional Graphics Corp.

Michelle Thorson, mthorson@dimensionalgroup.com

Farner-Bocken Company

Dean Onken, dean.onken@farner-bocken.com

Fleck Sales Company

Dudley Fleck, dfleck@flecksales.com

Galaxy Gaming, Inc.

Erica Westerheide, ewesterheide@galaxy.gaming.com

Gander Group

Rachel Pomije, rachel@thegandergroup.com

Genesis Gaming Solutions, Inc.

Randy Knust, RandyK@genesisingaming.com

HGM Associates, Inc.

Ron Tekippe, rtekippe@hgmonline.com

Hockenbergs Equipment & Supply Co

Sally Habrock, sallyh@hockenbergs.com

Holmes Murphy & Associates

Susan Hatten, shatten@holmesmurphy.com

J&A Printing

Jennifer Jacobson, jjacobson@japrinting.com

Johnson Brothers of Iowa

Benjamin Muehr, bmuehr@johnsonbrothers.com

Knoepfler Chevrolet

Heidi Connelly, heidi@KCHEV.dcom

Loffredo Fresh Produce Co.

Bill Day, bday@loffredo.com

Mixed Media Group, Inc.

Denny Orsinger, denny@mmgoutdoor.com

Moore, Heffernan, Moeller & Johnson, L.L.P.

Helen Jacobe, HJacob@MooreHeffernanLaw.com

Myers-Cox Co.

Christopher Dempsey, cdempsey@myerscox.com

National Food Group

Jessica Underhill, junderhill@nationalfoodgroup.com

Omaha Steaks

Neil Lucas, Neill@omahasteaks.com

Page 1 Printers

Kirk Friederick, kfriederick@page1printers.com

Prairie Event Supply

Carol Swift, carolswift@gmail.com

Premier Linen & Drycleaning Co.

Linda Southwood, lsouthwood@premierlinen.com

Prevail Promo

Pam White, Pam@prevailpromo.com

Procter & Gamble Professional

Tom Lathen, lathen.tb@pg.com

Share Corporation

Doug Stanwick, doug.stanwick@sharecorp.com

Southern Glazer's Wine and Spirits of Iowa, LLC

John D'Attoma, john.dattoma@sgws.com

Suzo Happ

Tom Orton, tom.orton@suzohapp.com

The Buzz Companies

Katie Mihalakis, katie@thebuzzcompanies.com

The Claussen Group

Stephen Jones, sfjones@theclaussengroup.com

Thompson Electric

Skip Perley, skip.perley@tec-corp.com

Tri State Shred Inc

Bruce Radtke, bradtke@tristateshred.com

USA Entertainment Agency

Jeff Johnson, jeff@usaentertainmentagency.com

Windstar Lines

Jeff Greteman, jeff@gowindstar.com